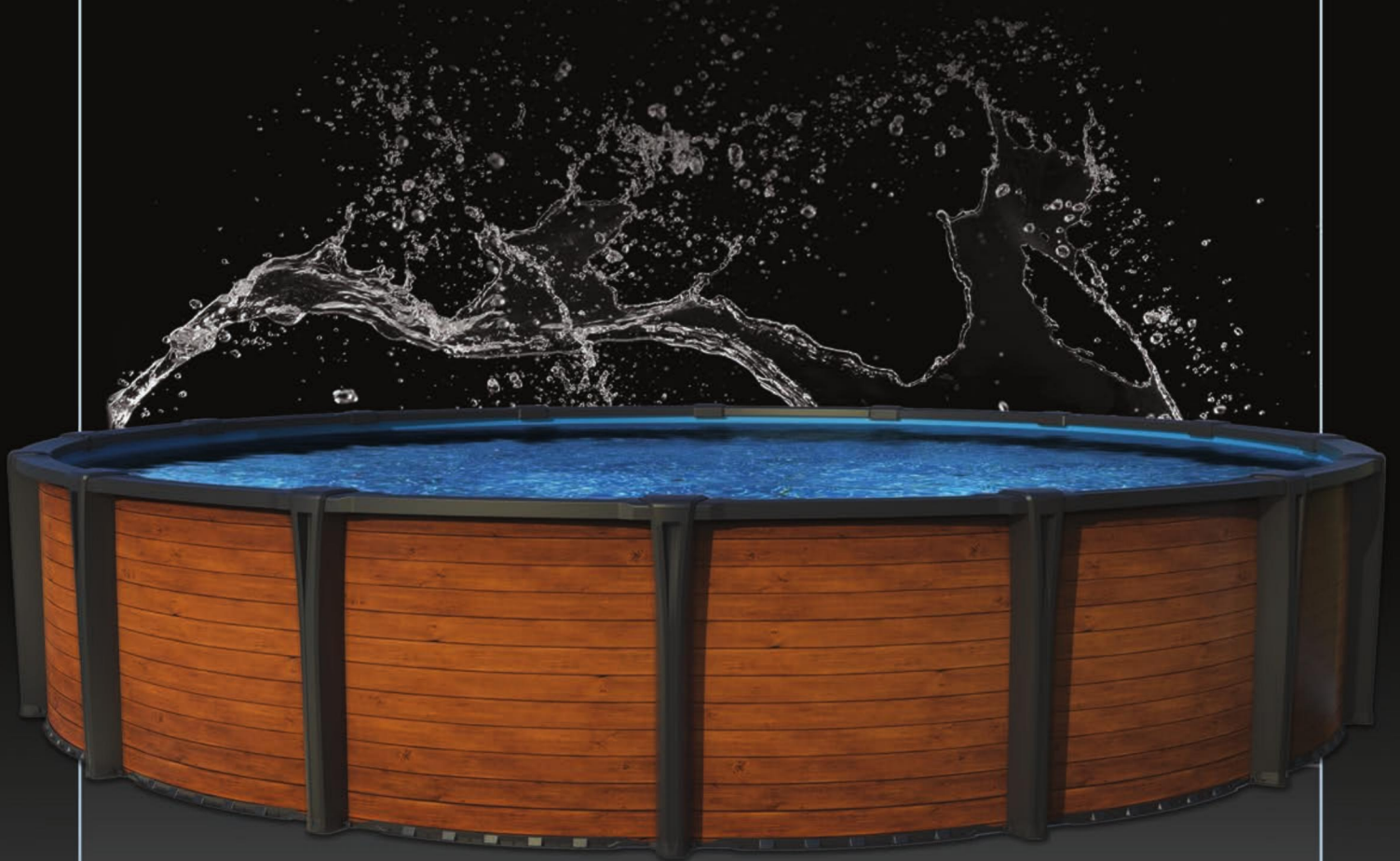




Above Ground Pools
Piscines Hors-Terre



DIAMOND SERIES

REDWOOD

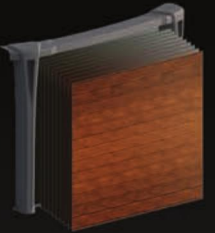
SÉRIE DIAMANT



Easy Base assembly.
Facilité d'assemblage de la base.



Easy Top structure assembly.
Facilité d'assemblage de la structure supérieure.



Multiple layers of Protection.
Protection multi-couches.



Graded rail to ensure good assembly.
Rail graduée assure un bon montage.

Starjet Option

Incorporate the illuminated Waterjet system.

Option StarJet

Incorporez le système de jet d'eau illuminé.

Ajustable Ledges Covers

One Screw interlock system.

Couvres Margelles Ajustables

Système d'emboîtement à une vis.

Thick & Robust Ledges

*Optimised for better weight distribution.
Superior quality resin blends.
7 1/2" Width.*

Margelles Robustes & Épaisses

*Optimisée pour une meilleure répartition du poids.
Mélange de résine supérieure.
Largeur de 7 1/2".*

StarGlow Option

Incorporate LED light system to your uprights.

Option StarGlow

Incorporez un système de lumière LED à vos poteaux.

High Quality Walls

*Industry renowned, heat treated, multilayered protection process.
Superior sturdiness.
Architectural 3D Design.*

Murs de Haute Qualité

*Procédé de protection multicouche traité thermiquement de renommée industrielle.
Solidité supérieure.
Design 3D architectural.*

Snap in Uprights

*Uprights Snaps in bottom plate for quick assembly.
Durable Top Plate Interface.
8" Width.*

Montants Encliquetables

*Les Montants s'encliquent pour un assemblage rapide.
Interface de Support de Margelle Durable.
Largeur de 8".*

Strong Feet Connexion

Strong interconnect rail assembly with disassembly feature. Screwing option for increased durability.

Connection de Pied Robuste

*Interconnexion rail solide avec détail de désassemblage.
Option de vissage pour durabilité accrue.*

Stable & High Wall Rails

At 1.6 inches high, the rail keeps the wall in place during ground shifts.

Rail Stable & Haut Support de Mur

D'une hauteur de 1.6 pouces, la rail garde le mur stable lors des mouvements de sol.

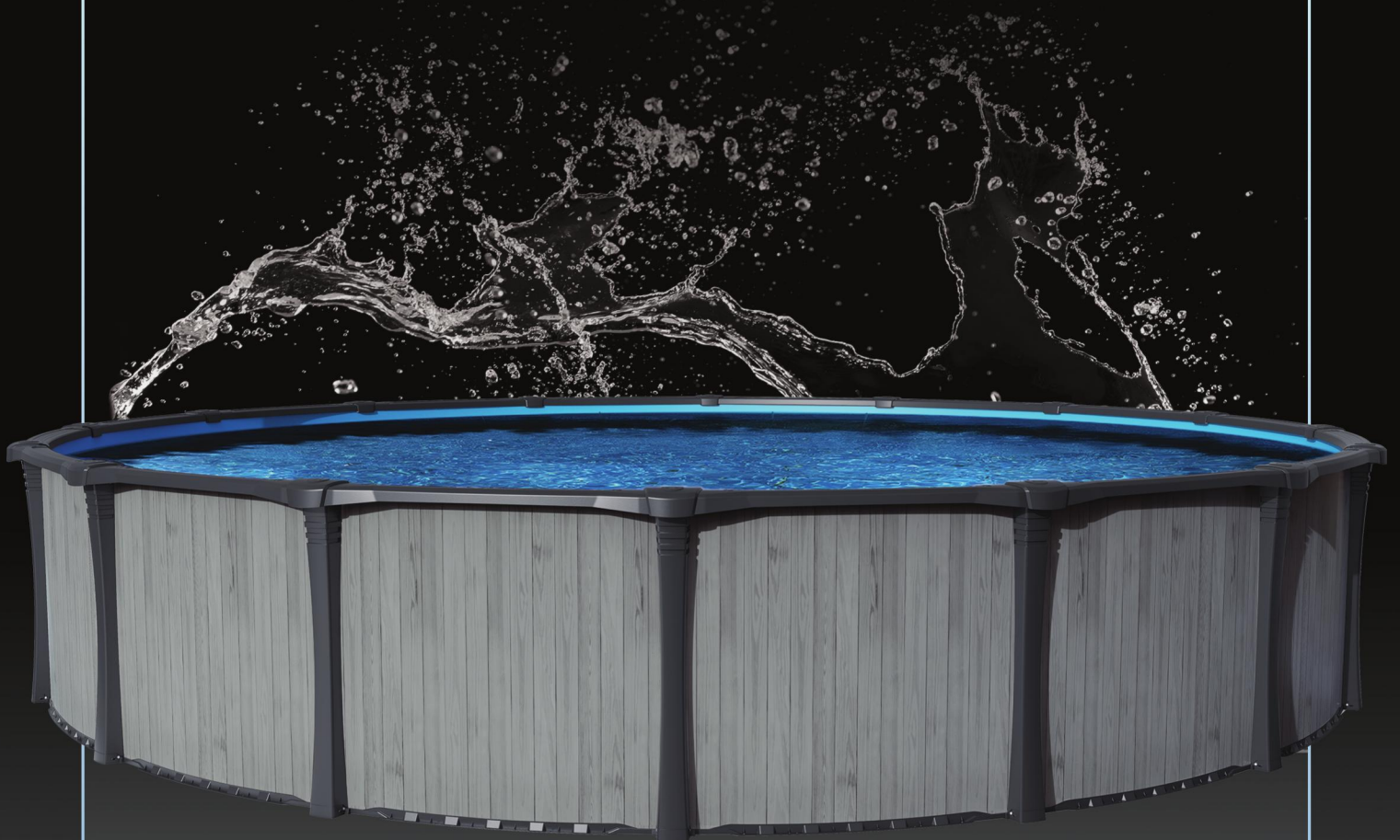
Design & Architecture

The Carvin Pool offers architecture on the cutting edge of Canadian Engineering. The quality of its 100% resin design provides an extremely reliable and robust product, which will be able to withstand the weather. All this, while also having a unique and modern design that will allow your backyard to stand out. Available sizes from 12 to 33 feet.

La piscine Carvin offre une architecture à la fine pointe de l'ingénierie canadienne. La qualité de sa conception 100% résine permet d'obtenir un produit extrêmement fiable et robuste, qui saura braver les intempéries. Tout cela, en ayant aussi un design unique et moderne qui permettra à votre cour extérieure de se démarquer. Tailles disponible de 12 à 33 pieds.



Above Ground Pools
Piscines Hors-Terre



GOLD SERIES

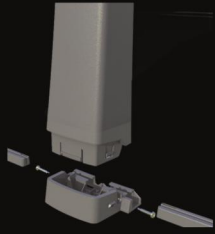
WHITE WOOD

SÉRIE OR

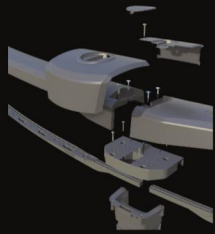
GOLD SERIES

WHITE WOOD

SÉRIE OR



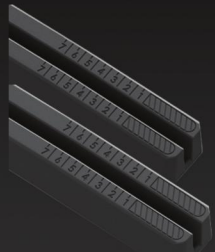
Easy Base assembly.
Facilité d'assemblage de la base.



Easy Top structure assembly.
Facilité d'assemblage de la structure supérieure.



Multiple layers of Protection.
Protection multi-couches.



Graded rail to ensure good assembly.
Rail graduée assure un bon montage.

Starjet Option

Incorporate the illuminated Waterjet system.

Option StarJet

Incorporez le système de jet d'eau illuminé.

Ajustable Ledges Covers

One Screw interlock system.

Couvres Margelles Ajustables

Système d'emboîtement à une vis.

Thick & Robust Ledges

*Optimised for better weight distribution.
Superior quality resin blends.
6 1/2" Width.*

Margelles Robustes & Épaisses

*Optimisée pour une meilleure répartition du poids.
Mélange de résine supérieure.
Largeur de 6 1/2".*

StarGlow Option

Incorporate LED light system to your uprights.

Option StarGlow

Incorporez un système de lumière LED à vos poteaux.

High Quality Walls

*Industry renowned, heat treated, multilayered protection process.
Superior sturdiness.
Architectural 3D Design.*

Murs de Haute Qualité

*Procédé de protection multicouche traité thermiquement de renommée industrielle.
Solidité supérieure.
Design 3D architectural.*

Snap in Uprights

Uprights Snaps in feet for quick Assembly. Durable Top Plate Interface. 6" Width.

Montants Encliquetables

*Les Montants s'encliquent pour un assemblage rapide.
Interface de Support de Margelle Durable.
Largeur de 6".*

Strong Feet Connexion

Strong interconnect rail assembly with disassembly feature. Screwing option for increased durability.

Connection de Pied Robuste

*Interconnexion rail solide avec détail de désassemblage.
Option de vissage pour durabilité accrue.*

Stable & High Wall Rails

At 1.6 inches high, the rail keeps the wall in place during ground shifts.

Rail Stable & Haut Support de Mur

D'une hauteur de 1.6 pouces, la rail garde le mur stable lors des mouvements de sol.

Design & Architecture

The Carvin Pool offers architecture on the cutting edge of Canadian Engineering. The quality of its 100% resin design provides an extremely reliable and robust product, which will be able to withstand the weather. All this, while also having a unique and modern design that will allow your backyard to stand out. Available sizes from 12 to 33 feet.

La piscine Carvin offre une architecture à la fine pointe de l'ingénierie canadienne. La qualité de sa conception 100% résine permet d'obtenir un produit extrêmement fiable et robuste, qui saura braver les intempéries. Tout cela, en ayant aussi un design unique et moderne qui permettra à votre cour extérieure de se démarquer. Tailles disponible de 12 à 33 pieds.

BACKYARD POOLS

1292A NORTH VETERANS BLVD.
TUPELO, MS 38804
PHONE: (662) 842-2728
BACKYARDPOOLSTUPELO.COM




THE POOLS BY WHICH ALL OTHER ABOVE GROUND POOLS ARE MEASURED...

BLUES



Height: 52"
Top Ledge: 7.5" Resin
Upright: 7.5" Resin
Bottom Rail: Resin
Stabilizer: Resin
Bottom Plate: Resin
Top Plate: Resin
Ledge Cover: Two Piece Resin
Wall: Heavy Duty
Structure Color: Champagne
Pattern: Fiesta
Oval System: Braceless
Salt Water Certified
5/60 Year Warranty

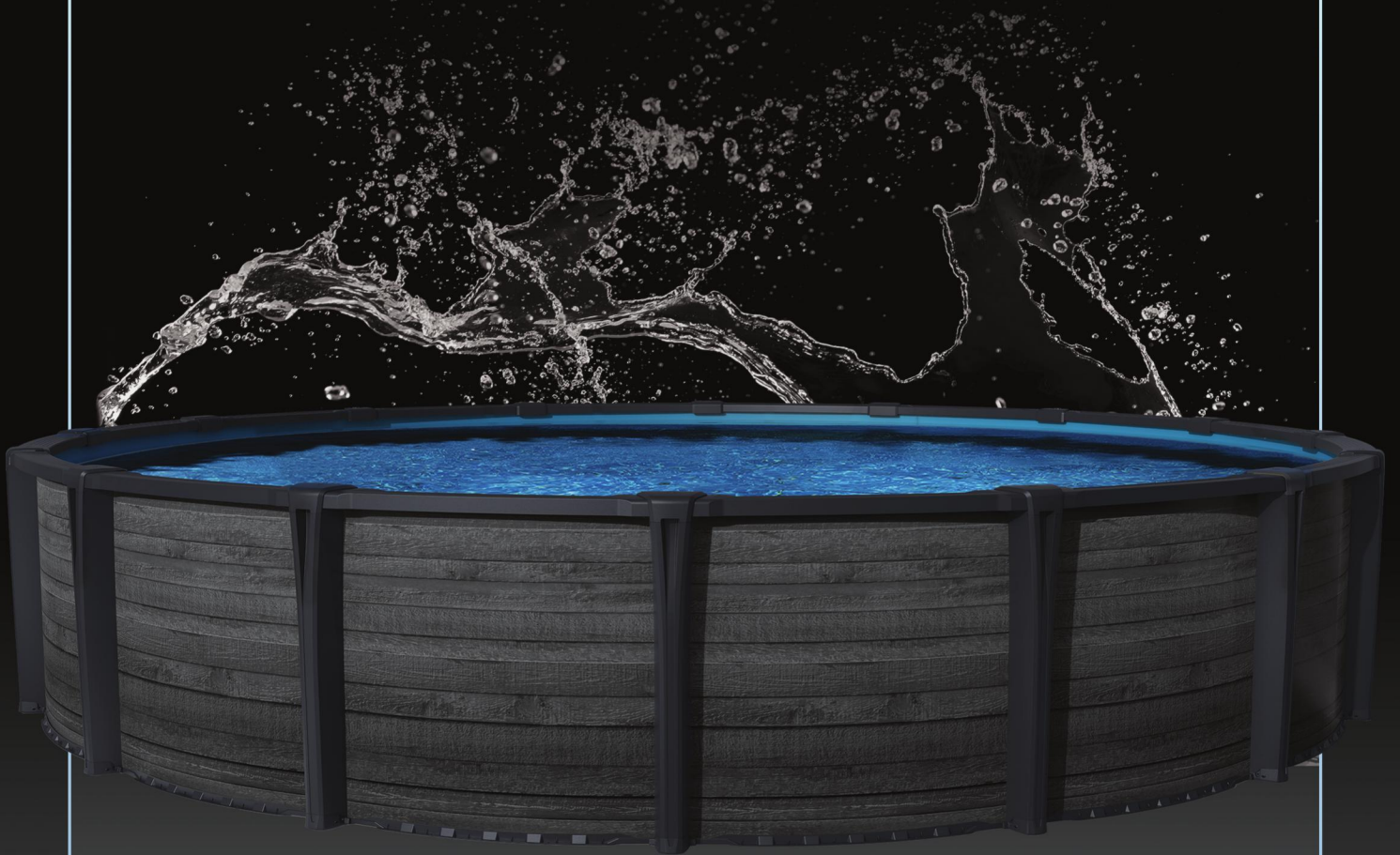
Available sizes:

Round  24'
27'
30'

Oval  15'x30'
18'x33'



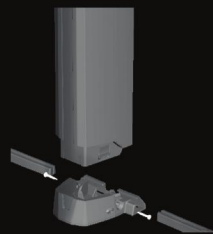
Above Ground Pools
Piscines Hors-Terre



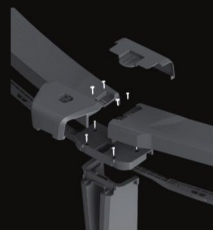
DIAMOND SERIES

DOWNTOWN

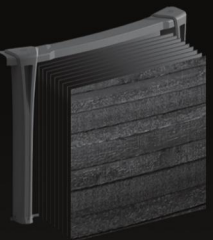
SÉRIE DIAMANT



Easy Base assembly.
Facilité d'assemblage de la base.



Easy Top structure assembly.
Facilité d'assemblage de la structure supérieure.



Multiple layers of Protection.
Protection multi-couches.



Graded rail to ensure good assembly.
Rail graduée assure un bon montage.

Starjet Option

Incorporate the illuminated Waterjet system.

Option StarJet

Incorporez le système de jet d'eau illuminé.

Ajustable Ledges Covers

One Screw interlock system.

Couvres Margelles Ajustables

Système d'emboîtement à une vis.

Thick & Robust Ledges

*Optimised for better weight distribution.
Superior quality resin blends.
7 1/2" Width.*

Margelles Robustes & Épaisses

*Optimisée pour une meilleure répartition du poids.
Mélange de résine supérieure.
Largeur de 7 1/2".*

StarGlow Option

Incorporate LED light system to your uprights.

Option StarGlow

Incorporez un système de lumière LED à vos poteaux.

High Quality Walls

*Industry renowned, heat treated, multilayered protection process.
Superior sturdiness.
Architectural 3D Design.*

Murs de Haute Qualité

*Procédé de protection multicouche traité thermiquement de renommée industrielle.
Solidité supérieure.
Design 3D architectural.*

Snap in Uprights

*Uprights Snaps in bottom plate for quick assembly.
Durable Top Plate Interface.
8" Width.*

Montants Encliquetables

*Les Montants s'encliquent pour un assemblage rapide.
Interface de Support de Margelle Durable.
Largeur de 8".*

Strong Feet Connexion

Strong interconnect rail assembly with disassembly feature. Screwing option for increased durability.

Connection de Pied Robuste

*Interconnexion rail solide avec détail de désassemblage.
Option de vissage pour durabilité accrue.*

Stable & High Wall Rails

At 1.6 inches high, the rail keeps the wall in place during ground shifts.

Rail Stable & Haut Support de Mur

D'une hauteur de 1.6 pouces, la rail garde le mur stable lors des mouvements de sol.

Design & Architecture

The Carvin Pool offers architecture on the cutting edge of Canadian Engineering. The quality of its 100% resin design provides an extremely reliable and robust product, which will be able to withstand the weather. All this, while also having a unique and modern design that will allow your backyard to stand out. Available sizes from 12 to 33 feet.

La piscine Carvin offre une architecture à la fine pointe de l'ingénierie canadienne. La qualité de sa conception 100% résine permet d'obtenir un produit extrêmement fiable et robuste, qui saura braver les intempéries. Tout cela, en ayant aussi un design unique et moderne qui permettra à votre cour extérieure de se démarquer. Tailles disponible de 12 à 33 pieds.



Embassy PoolCo

A DIVISION OF H.I.I.

Vienna

52" HIGH POOL WALL



Vienna



Embassy PoolCo

A DIVISION OF H.I.I.

Quality Features

- 10" wrap around top connectors.
- Huge 8" resin top rails and 8" resin verticals in a beige tone.
- 52", hot-dipped galvanized copper bearing steel wall in a sophisticated Vienna pattern.
- Large, pre-punched skimmer and eyeball return openings eliminate sharp edges that could cut the liner during installation.
- Staggered bolt wall closure provides maximum strength and wall stability.
- Corrugated pool wall for flexibility and vertical strength.
- Compac supports on all ovals.
- 20 Year Limited Warranty on all pool components. The first two years of the pool product warranty, and the first three years of the liner warranty, are covered 100% against manufacturer defects. Remainder of each warranty is prorated.



Available Sizes

Round: 16', 18', 21', 24', 27', 30'

Oval: 12' x 20', 12' x 24', 16' x 24', 16' x 28', 16' x 32', 18' x 34', 21' x 41'

IMPORTANT: The "No Diving" and other Warning signage provided must be installed on each pool as indicated in the instructions provided.

NOTE: In some photos of the pools in the brochure (or web site), the "No Diving" and other Warning signage may not be visible, such Warning Signage must be installed as indicated in the instructions provided.

Hollowell Industries, Inc. stands behind every product we produce pursuant to those representations which are stated in our written warranties. Your dealer/builder/installer/contractor is an independent business and not an agent/representative or employee of Hollowell Industries, Inc. We cannot and do not accept any responsibility for any representations, statements or contracts made by any dealer/builder/installer or contractor.